



KONGSBERG

Passive Sonar Processing System

PSPS

www.kongsberg.com



WORLD CLASS

- through people, technology and dedication

Kongsberg Gruppen ASA (KONGSBERG) is an international technology corporation that delivers advanced and reliable solutions that improve safety, security and performance in complex operations and during extreme conditions.

KONGSBERG is a customer focused organization with a worldwide performance culture. KONGSBERG works with demanding customers in the global defence, maritime, oil and gas and aerospace industries.

The KONGSBERG Passive Sonar Processing System (PSPS) provides the best possible picture of the surface and underwater environment, including high-quality displays for the sonar operators for surveillance, tactical and safety purposes, as well as providing contact information to the Combat Management System.

DELIVERING OUTSTANDING
SYSTEM PERFORMANCE BY
COMBINING TECHNOLOGY
AND EXPERIENCE



OVERALL SYSTEM ARCHITECTURE

The KONGSBERG PSPS is fully based on Commercial-Off-The-Shelf (COTS) components and Open System Standards, which facilitates easy future modifications and upgrades.

The KONGSBERG PSPS processes and integrates data from all kinds of passive sonar arrays, including:

- Bow Arrays
- Intercept Arrays
- Distributed Arrays (Passive Ranging Sonar)
- Flank Arrays
- Towed Arrays
- Own Noise Sensors

In addition, the PSPS controls active sonar transmissions and integrates Bottom Mapping and Mine Avoidance Sonars.

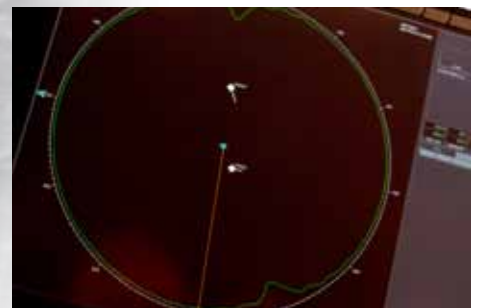
The very compact systems solution can easily be accommodated in existing and new submarines and comprises the following units:

- Front End Conditioning/Analogue to Digital Converters
- Sonar Processing Cabinet
- Multi-Function Consoles

COTS BASED SYSTEM ARCHITECTURE



ONE THIRD OF
THE WORLD
IS COVERED BY LAND
- THE REST IS COVERED
BY KONGSBERG

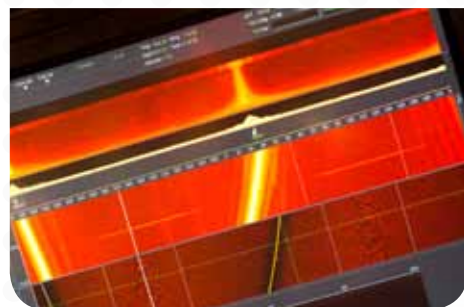


PASSIVE SONAR SYSTEM FUNCTIONALITY

The KONGSBERG PSPS performs advanced parallel signal processing, including:

- Conventional beamforming
- Adaptive beamforming
- Subspace beamforming (MUSIC based)

This advanced processing, combined with world class tracking and TMA capabilities, results in that detection is achieved at longer range and with higher confidence than in comparable passive sonar systems.



UNMATCHED DETECTION
CAPABILITIES AND
BEARING ACCURACY



WORLDWIDE OPERATIONS

KONGSBERG is an international corporation with strong Norwegian roots. Collaboration with our customers, partners and suppliers, and a commitment to understand the context where our technology is applied, are important driving forces behind the corporation's international development and growth.



WORLD CLASS

- through people, technology and dedication

Kongsberg Defence Systems

P.O. Box 1003
NO-3601 Kongsberg
Norway

Phone: + 47 32 28 82 00
Fax: + 47 32 28 86 20
E-mail: office.kda@kongsberg.com

Headquarters:

Kirkegaardsveien 45
NO-3616 Kongsberg
Norway

Phone: +47 32 28 82 00

